

***A Funding Framework To
Address Efficiency And Equity
In Public Higher Education
Institutions In South Africa***

***Prof. Prakash Naidoo
Deputy Vice-Chancellor: Resources and Planning
Vaal University of Technology
South Africa***

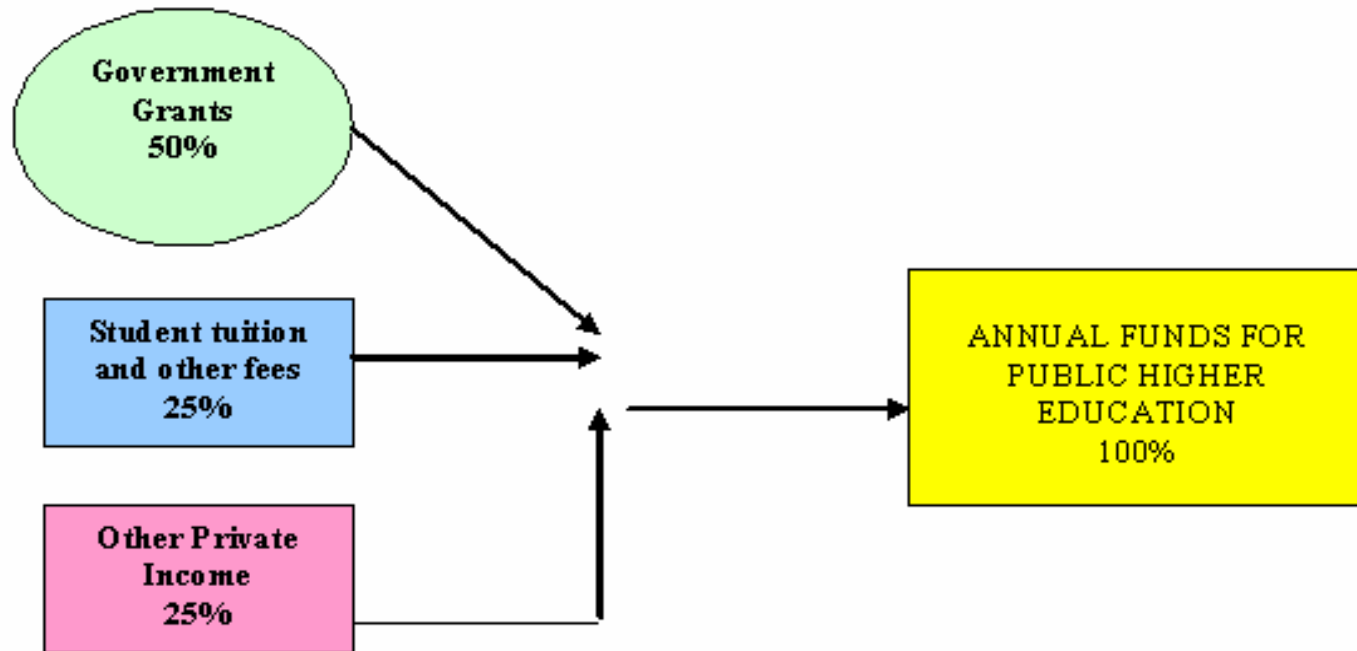
STRATEGIC OBJECTIVES

- SKILLED AND COMPETENT GRADUATES
- EQUITY
- DIVERSITY IN HE
- SUSTAIN AND PROMOTE RESEARCH
- COLLABORATION

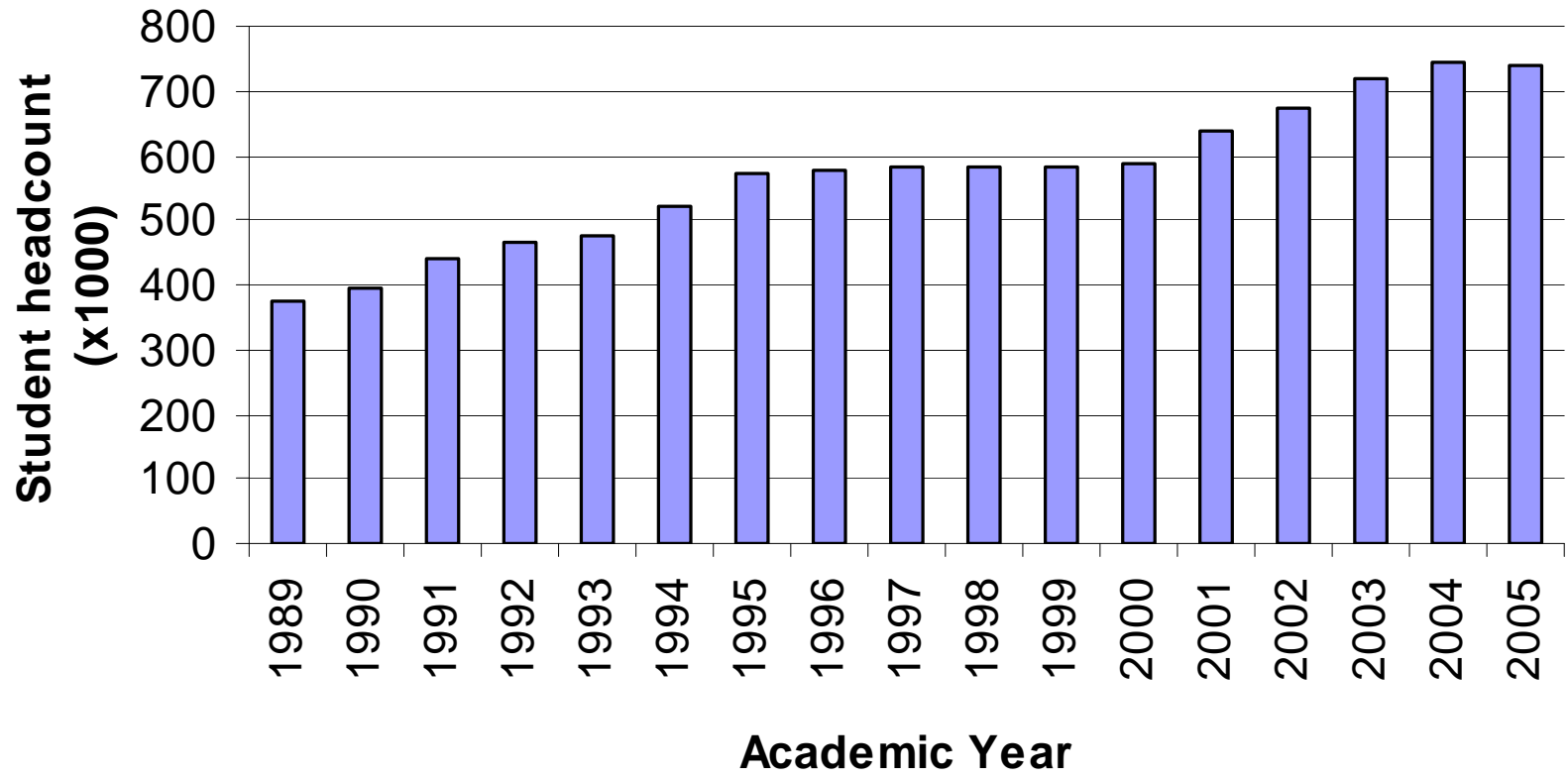
LANDSCAPE

	Type	No	Students (%)
Before 2004	HAU's	11	54%
	HDU's	10	14%
	HAT's	9	24%
	HDT's	5	8%
After 2004	Traditional	11	36%
	Comprehensive	6	44%
	UoTs	6	20%

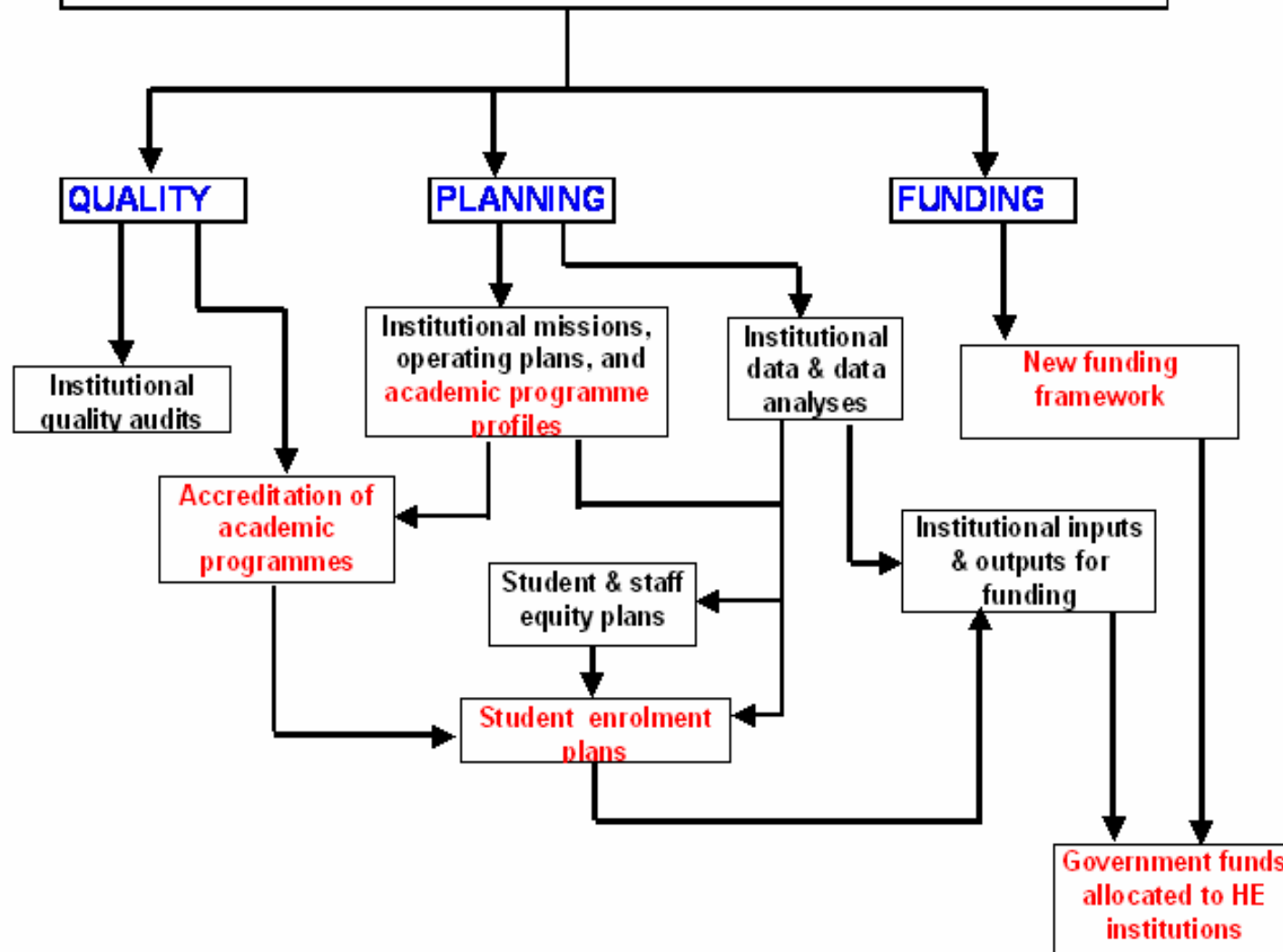
SOURCES OF FUNDS

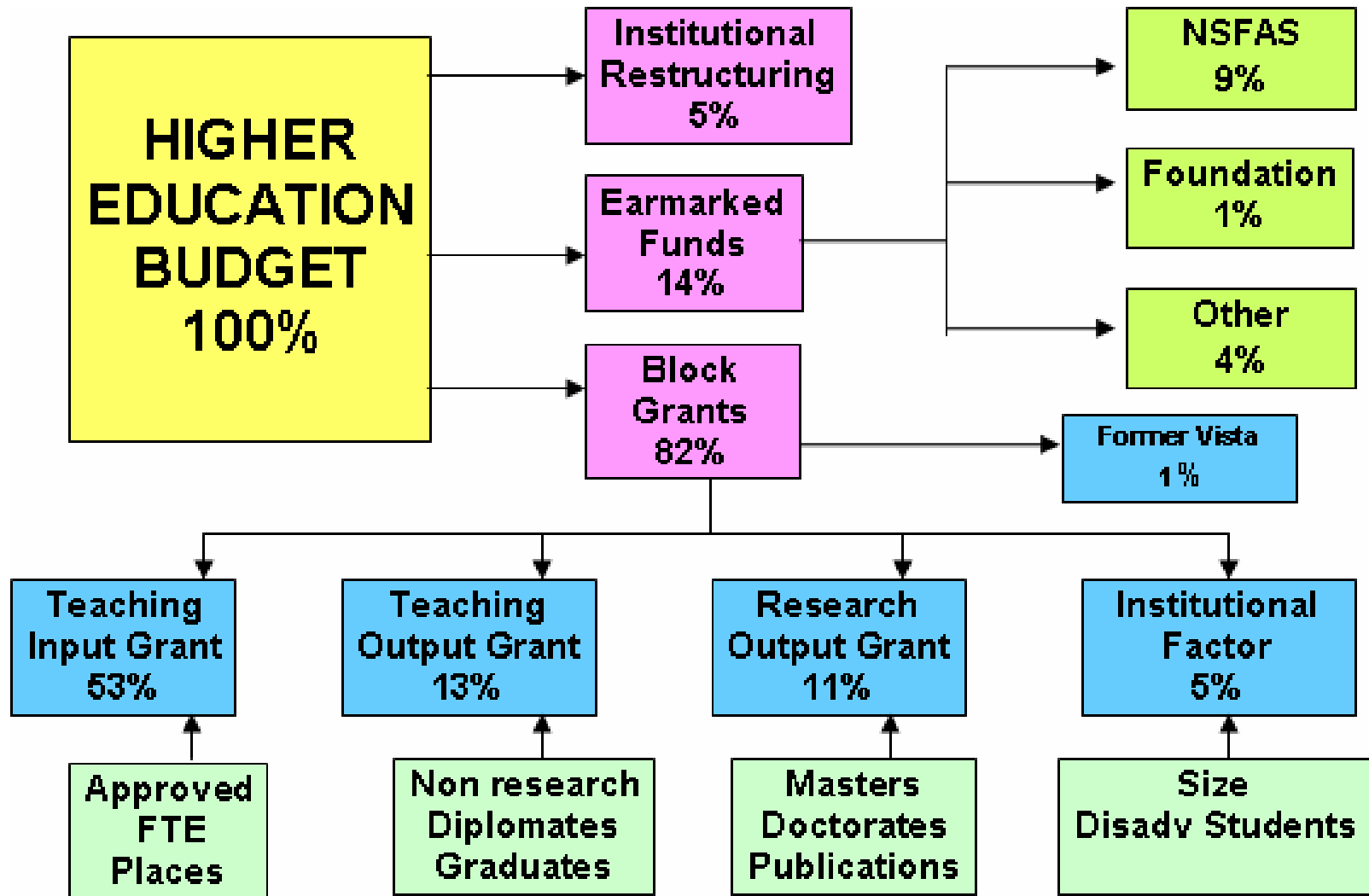


ENROLMENT PATTERNS



GOVERNMENT STEERING OF THE PUBLIC HE SYSTEM





Funding grid for teaching inputs

Funding group	CESM categories included in funding group
1	07 education, 13 law, 14 librarianship, 20 psychology, 21 social services/public administration
2	04 business/commerce, 05 communication, 06 computer science, 12 languages, 18 philosophy/religion, 22 social sciences
3	02 architecture/planning, 08 engineering, 10 home economics, 11 industrial arts, 16 mathematical sciences, 19 physical education
4	01 agriculture, 03 fine and performing arts, 09 health sciences, 15 life and physical sciences

WEIGHTING FACTORS

Funding Group	Under Graduate	Honours BTech	Masters	Doctoral
1	1	2	3	4
2	1.5	3	4.5	6
3	2.5	5	7.5	10
4	3.5	7	10.5	14

WEIGHTING –TEACHING OUTPUTS

	Weight	Benchmark %
1 st CERT /DIPLOMA 2YRS <	0.5	22.5 (13.5)
1 st DIP/DEG 3 YRS	1.0	22.5 (13.5)
1 st B Deg 4 YRS	1.5	18(9)
Postgraduate and post diploma	0.5	54(27)
Postgraduate degrees	1.0	54(27)
Honours degrees/higher diplomas	0.5	54(27)
Non research M's	0.5	30(22.5)

**Distance education institutions indicated in brackets*

**Institutional factor grants for disadvantaged students:
2004/05 to 2006/07**

Proportion of African + coloured students in relevant FTE student enrolment (SA citizens only)	Additional amount added to relevant teaching input grant
80% and above	10%
75%	8.75%
70%	7.5%
65%	6.25%
60%	5%
55%	3.75%
50%	2.5%
45%	1.25%
40% and below	0

Institutional factor grants for institutional size

Total FTE student enrolment	Additional amount added to teaching input grant
4 000 and less	15%
6 000	13.6%
8 000	12.1%
10 000	10.7%
12 000	9.3%
14 000	7.9%
16 000	6.4%
18 000	5.0%
20 000	3.6%
22 000	2.1%
25 000 and more	0

EARMARKED GRANTS

- NATIONAL STUDENTS FINANCIAL AID SCHEME
- INFRASTRUCTURE AND OUTPUT EFFICIENCY FUNDS
- FOUNDATION PROGRAMME GRANTS

IMPACT

- MIGRATION STRATEGY
- TRADITIONAL VS UoTs
- ENTRY INTO HIGHER EDUCATION
- 3RD STREAM INCOME
- QUALITY

THANK YOU

traceyn@vut.ac.za