



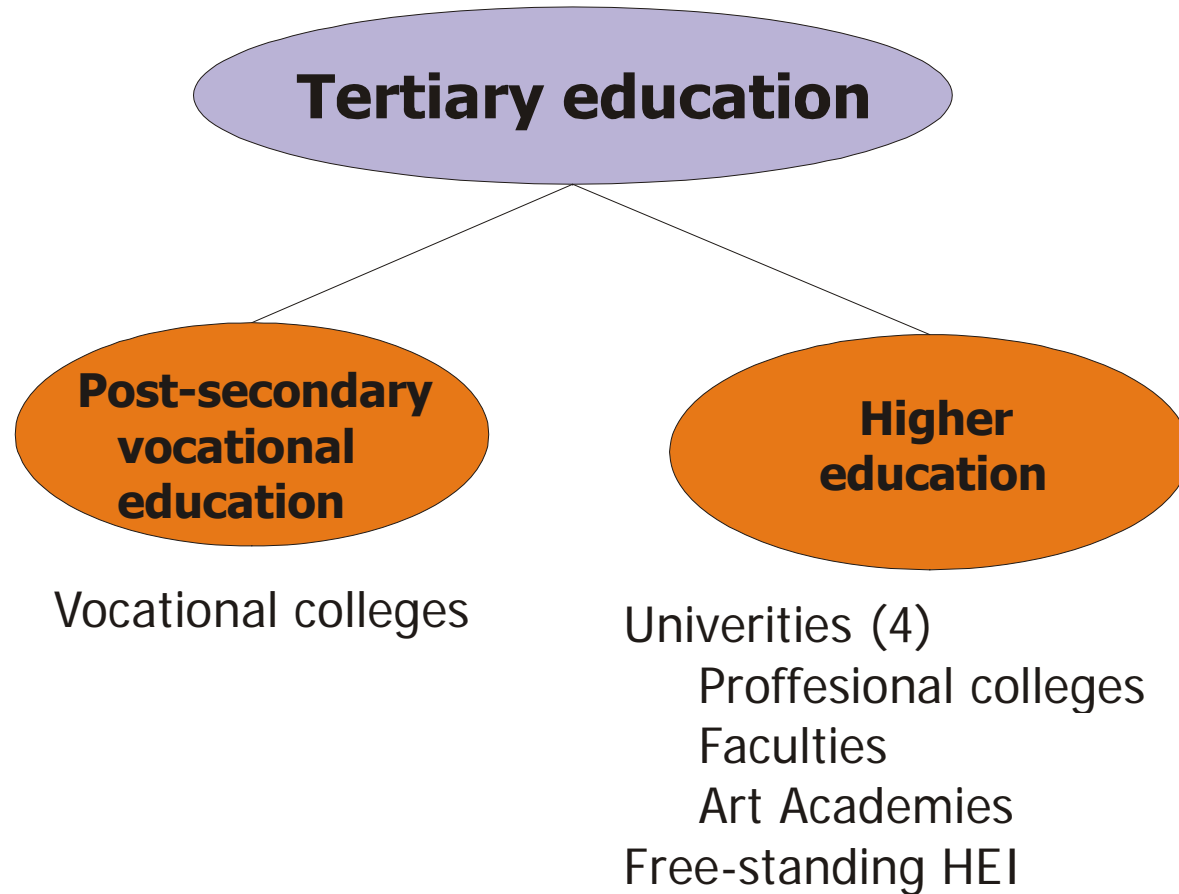
Funding, Equity and Efficiency of Higher Education

Funding of Higher education in Slovenia – The Introduction of Lump-Sum Instrument

asist. Borut Kodrič
doc.dr Nada Trunk-Širca
doc.dr.Rok Strašek

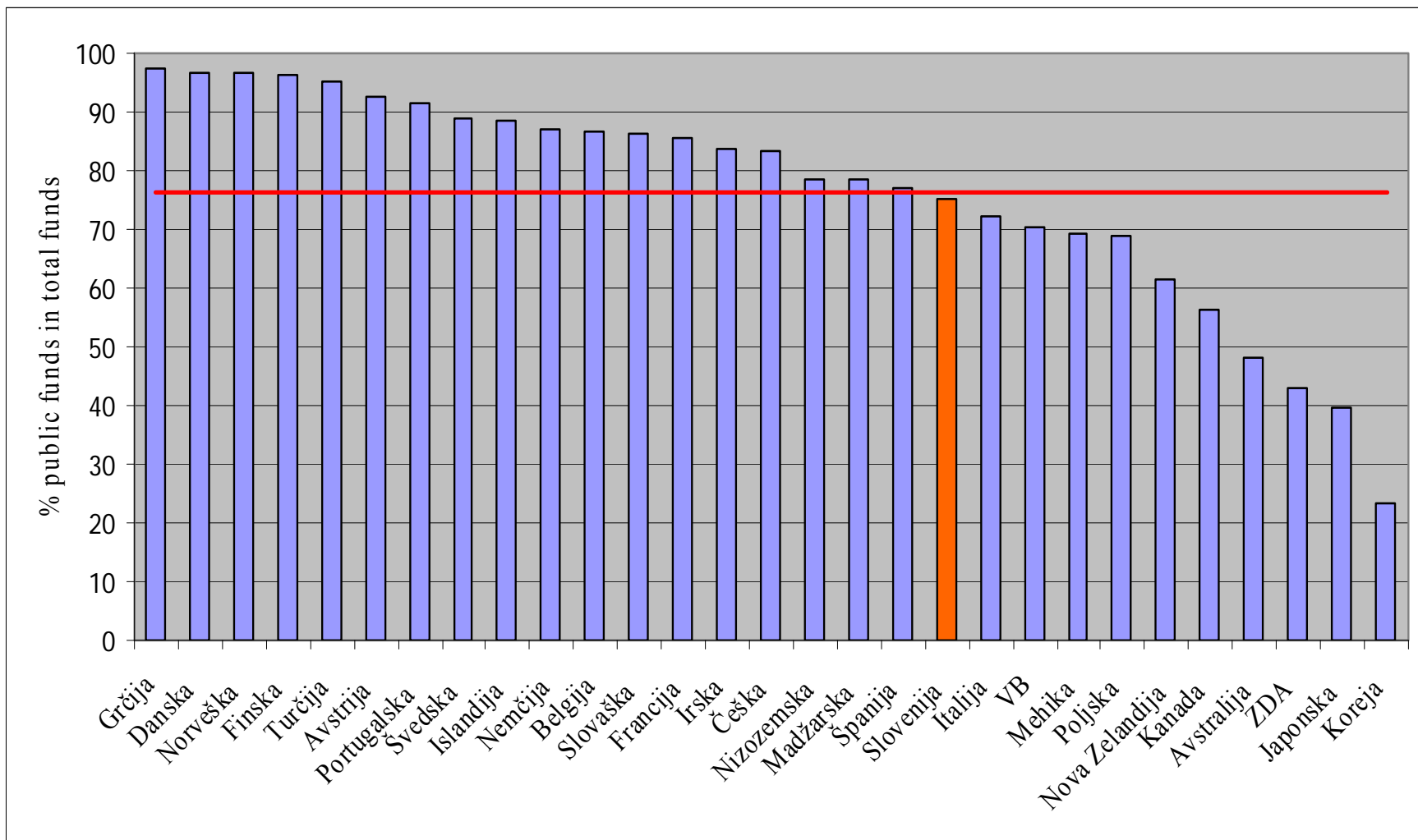


Organisation of tertiary education





Funding of tertiary education - 1





Funding of tertiary education - 2

	Slo	EU25	EU15
Total public expenditure on education as % of GDP, at tertiary level of education (ISCED 5-6)	1,34	1,15	1,16
Annual expenditure on public and private educational institutions per student in EUR PPS, at tertiary level of education (ISCED 5-6)	5.743	8.060	8.868
Annual expenditure on public and private educational institutions per student compared to GDP per capita, at tertiary level of education (ISCED 5-6)	34,8	36,7	37,4
Financial aid to students as % of total public expenditure on education, at tertiary level of education (ISCED 5-6)	25,2	16,1	16,9



Funding of tertiary education - 3

- **Funding of post-secondary vocational education**
 - **Standards adopted in 1996**
- **Funding of higher education**
 - **Funding of study activities**
 - **Funding of research**
 - **Funding for investment**



Funding of higher education – study activities

– Undergraduate:

- **Full-time: Decree on the public financing of higher education and other university member institutions 2004-2008**
- **Part-time: tuition fees**

– Postgraduate:

- **Tuition fees**
- **Public tender for co-financing of postgraduate studies, 'Young researchers'**



Lump sum funding - 1

- **Planning of the budget on the state level**
- **Allocation of the funds to HEI**
 - **LS=OLS+NLS**



Lump sum funding - 2

OLS

- 2004: 80 %
- 2005: 77,5 %
- 2006: 75 %
- 2007: 65 %
- 2008: 60%

NLS

- $NLS = LIV * \Sigma ((\check{S} + D * Ud) * f(s))$

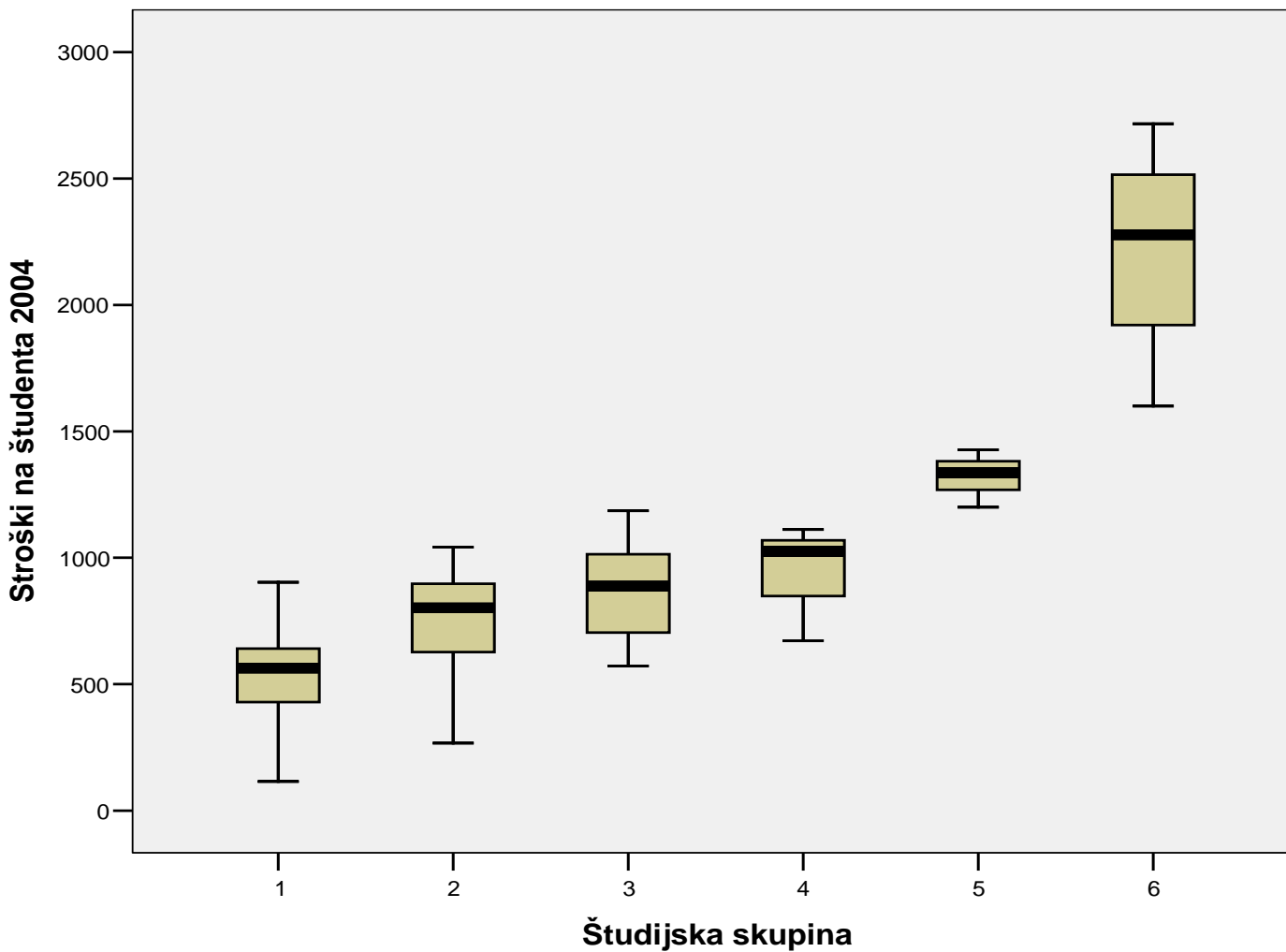


Education groups

- **(31) Social nad behavioural science, (32) Journalism and information, (34) Business and administration, (38) Law, (76) Social services: $f = 1,0$**
- **(22) Humanities, (14) Teacher training and education science, (81) Personal services, (84) Transport services, (86) Security services, (723) Health care, (725) Public health services, (726) Rehabilitation: $f = 1,75$**
- **(48) Computing, (52) Engineering and engineering trades, (54) Manufacturing and processing, (58) Architecture and building, (85) Environmental protection: $f = 2,50$**
- **(42) Life sciences, (62) Agriculture, forestry and fishery, (727) Pharmacy: $f = 3,00$**
- **(44) Physical sciences, (46) Mathematics and statistics: $f = 3,50$**
- **(64) Veterinary, (721) Medicine, (724) Dental services, (21) Arts: $f = 4,50$**

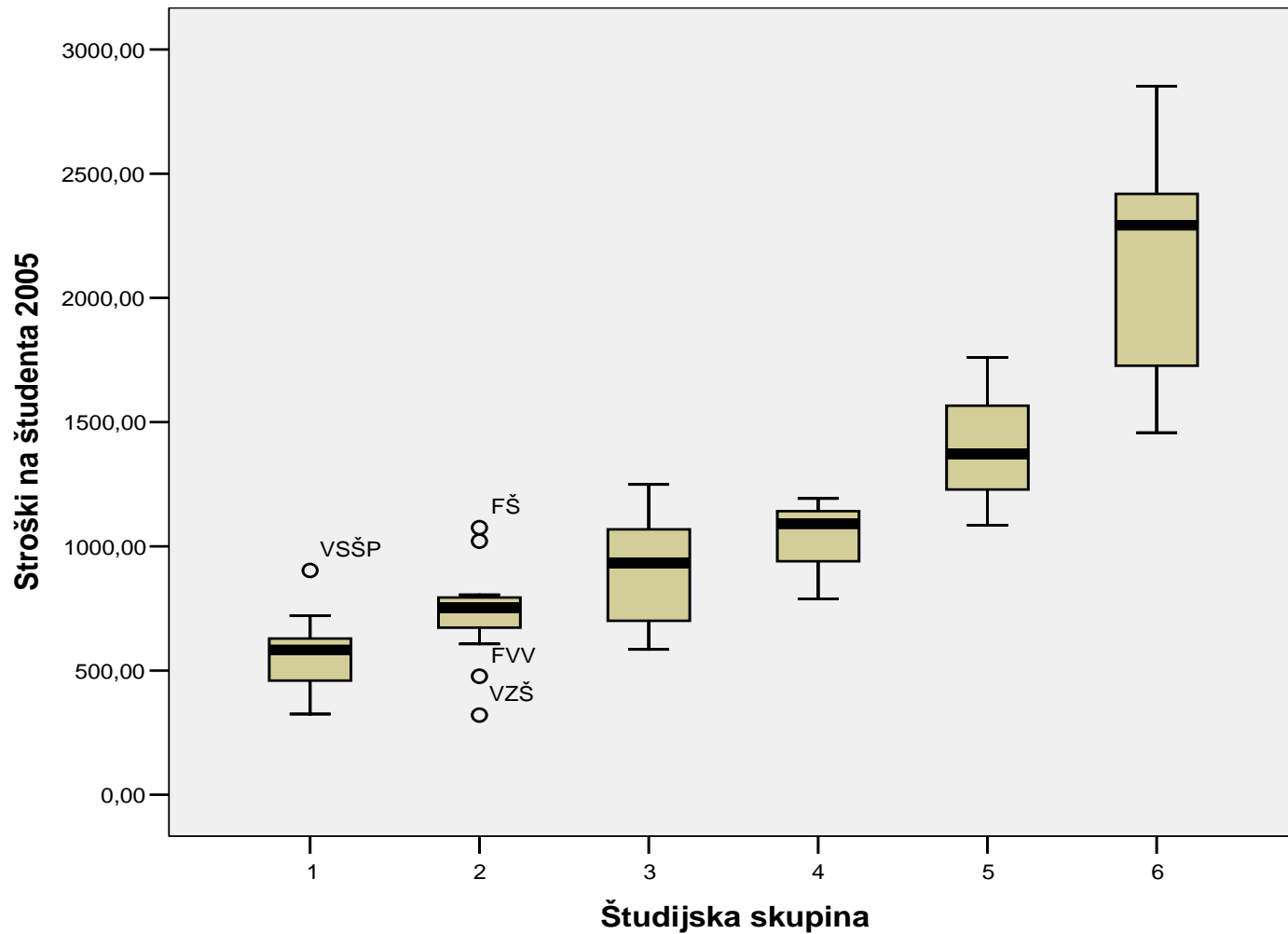


Expenditure on study activities by education groups (2004)



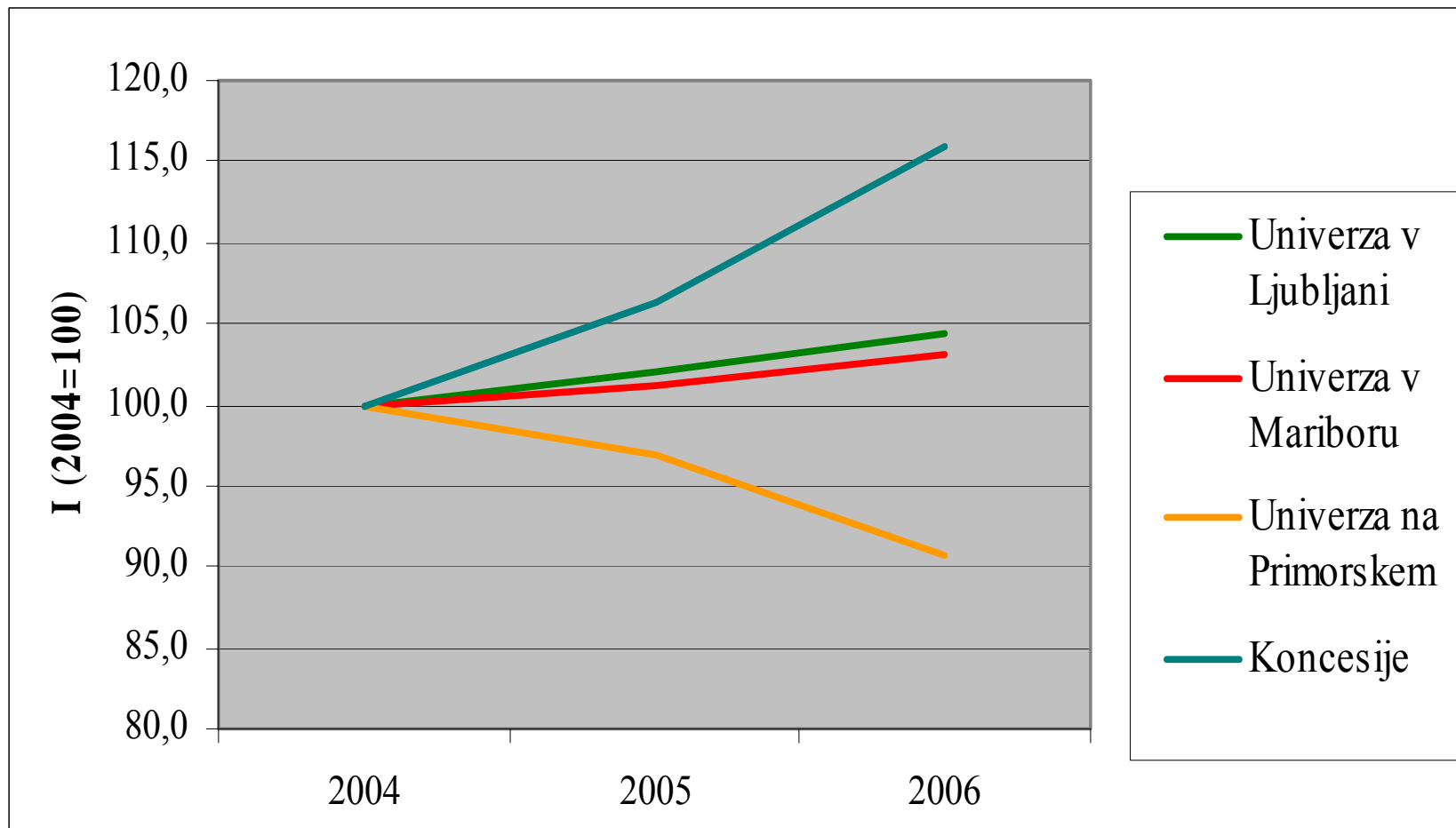


Expenditure on study activities by education groups(2005)





Funds per student





Funds vs. Expenditure by Study Groups

	Funds/expenditure ratio	
	2004	2005
Group 1	0,77	0,76
Group 2	1,01	1,03
Group 3	0,98	0,99
Group 4	1,03	1,00
Group 5	1,04	0,98
Group 6	0,93	0,95



Simulations

Year	HEI	Decree ¹	Decree, without exceptions ²	70 S:30 N ³	60 S:40N ⁴	50 S:50 N ⁵	40 S:60 N ⁶	100S ⁷
2004	All	17.7	17.0	15.7	14.5	13.3	12.7	12.2
	Without academies	16.6	16.1	14.9	13.8	12.7	12.3	12.2
2005	All	14.6	14.6	13.8	13.1	12.7	12.4	12.3
	Without academies	14.3	14.5	13.7	13.0	12.6	12.4	12.4



Questions, comments...

